



广鑫集团
GX GROUP



广鑫集团
GX GROUP

First Class One-Stop Stainless Steel Supplier



Our Word, Your Assurance



FOSHAN GUANGHETONG TRADING CO., LTD.

Your Top Choice For Stainless Steel

Commitment | Customer-Centric | Collaboration | Innovation

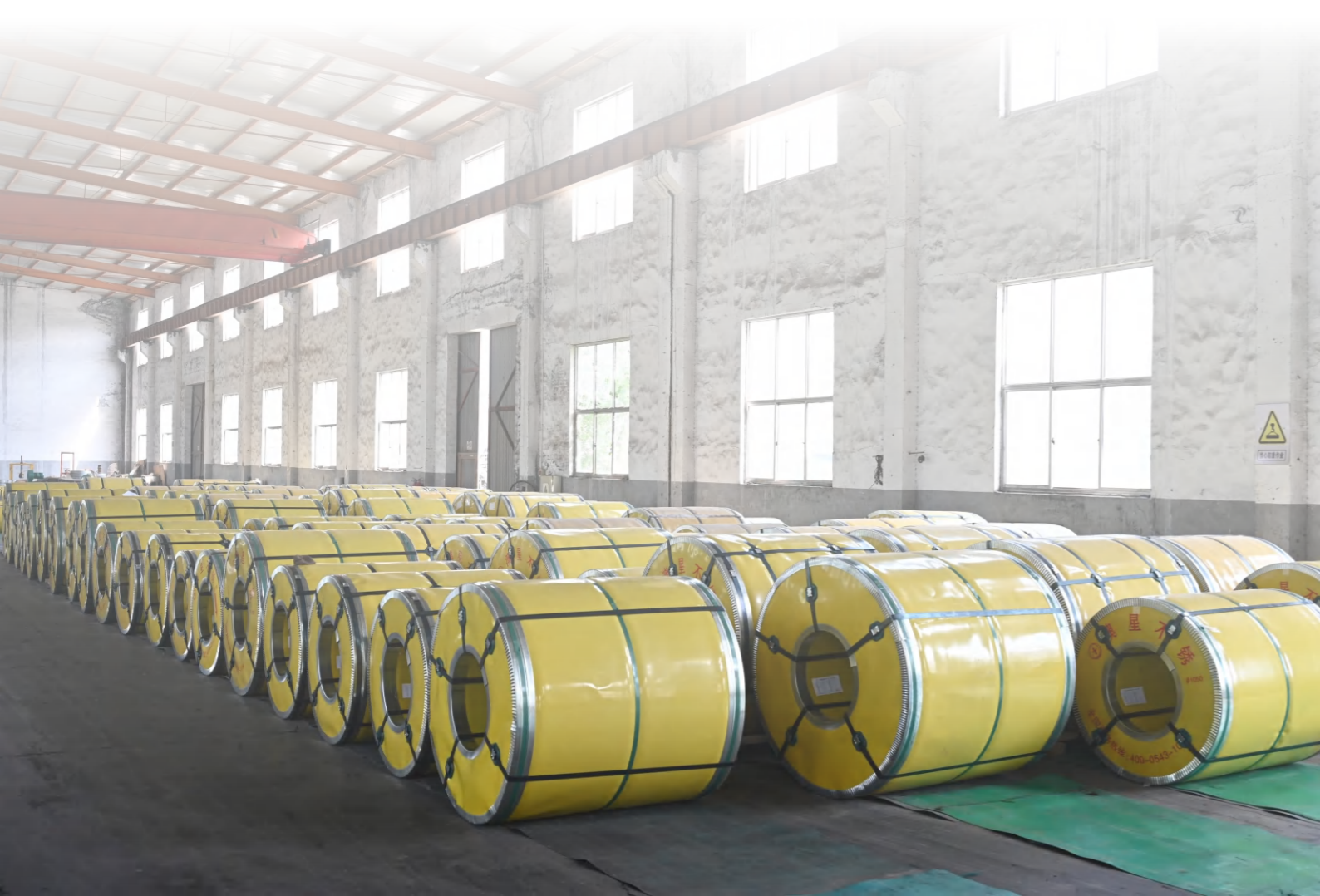
Company Profile

Located in Foshan, the heart of southern China's stainless steel trading hub, Foshan Guanghetong Trading Co., Ltd. is a leading enterprise with over a decade of dedication to the industry. We are proud to be a part of the GX Group, alongside our sibling company, X-Metal Material Co., Ltd., further strengthening our market presence and capabilities. Specializing in a comprehensive range of stainless steel services, we offer production, sales, processing, and storage. Our strategic location provides us with excellent transportation links and enables rapid sharing of market insights, keeping us ahead of the curve.

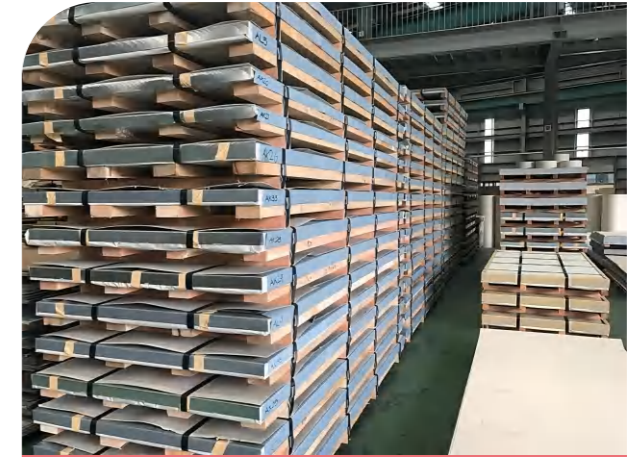
Our product portfolio is extensive, featuring stainless steel coils, sheets, strips, and customized items. These products come in a variety of grades and finishes to meet the unique needs of our global clientele. Beyond products, our services include shearing, slitting, film covering, packaging, and a complete suite of import/export trading services.

We maintain a strategic partnership with Aoxing Cold Rolled Stainless Steel Mill, which enhances our market position and allows us to distribute their high-quality products globally.

Driven by a customer-centric ethos, we continuously strive to enhance our professional sales and service teams. Our mission is to offer a one-stop stainless steel solution that promptly meets customer's needs, reflecting the true essence of our brand—excellence, reliability, and an unwavering commitment to customer's satisfaction



Production Base



Stainless Steel Sheet



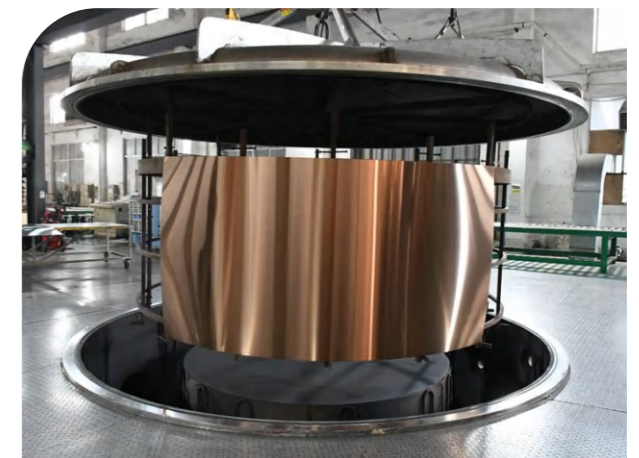
Stainless Steel Coil



8K Mirror Stainless Steel Coil



Stainless Steel Strip

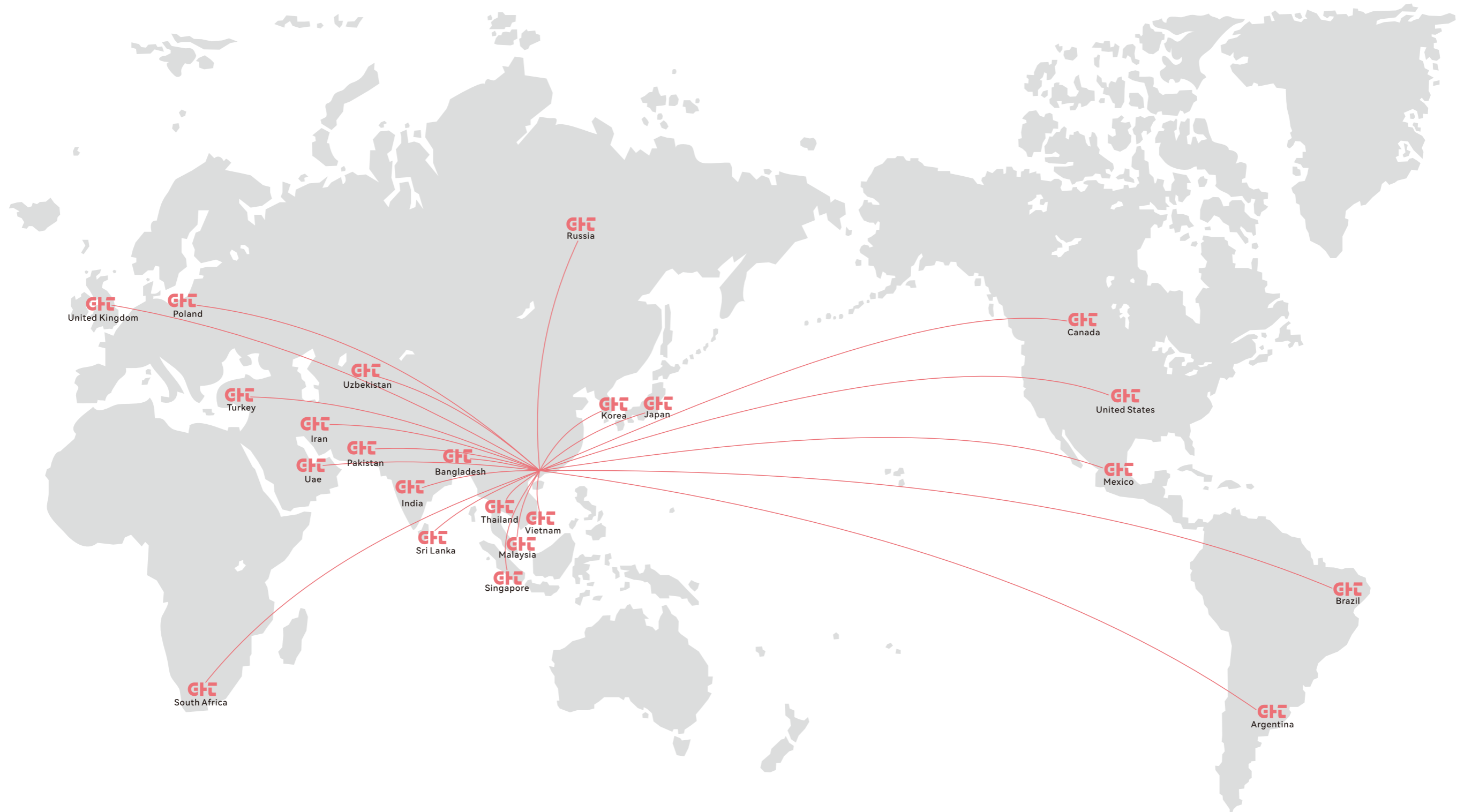


PVD Coating

Market Distribution

Our global export network spans every corner of the world.

With a reputation for outstanding quality and service, our products find homes in Europe, South America, Middle East countries, Russia, Korea, Thailand, Vietnam, Bangladesh, generating an annual sales volume of 80 million dollars. These are our key markets.



Facility Introduction



Our state-of-the-art facility, spanning over 7,000 square meters, underscores our commitment to stainless steel excellence. Through strategic partnerships, we've amassed an inventory of over 20,000 tons of stainless steel coils. Coupled with advanced cutting and slitting capabilities, this enables us to offer tailored processing services to meet diverse client needs.

Quality and customer satisfaction are paramount in our operations. We adhere to the highest product quality standards and employ industry-leading production methodologies. This allows us to deliver unparalleled products and services, reinforcing our industry leadership.

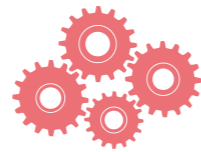
Our corporate ethos blends innovation, pragmatism, integrity, and collaboration, driving us to excel in both product quality and processing expertise. As we look to the future, our focus remains on refining our offerings and setting new industry benchmarks.



Facility Area
7000m²+



Stocking Capacity
20000 MTs+



Processing Lines
10 lines+



Experience
10 years+



Stainless Steel Coil Warehouse



Stainless Steel Sheet Warehouse

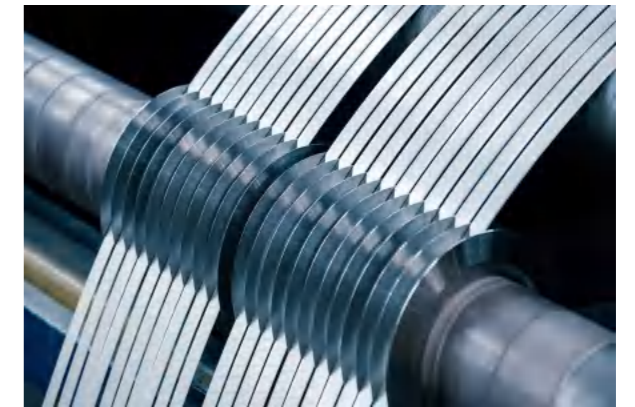


Coil Processing Line

All-in-One Coil Processing Service



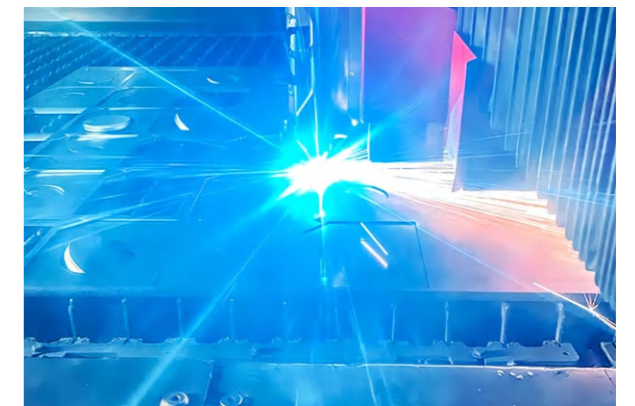
Coil Cutting Line
Width: 20mm~1525mm
Length: length customized available
Thickness: 0.2mm~3.0mm



Slitting Production Line
Width: 20mm~1525mm
Length: length customized available
Thickness: 0.2mm~3.0mm



Sheet Metal Bending Line
Grooving, Cutting, Bending



Laser Cutting Machine
Width: 10mm~2500mm
Length: 10mm~6000mm
Thickness: 0.3mm~3.0mm



Decorative Stainless Steel Sheet Production Lines

Leading Complete Stainless Steel Finish Solution Facilities



Brushing Process Line

Finish Options: No.4/Hairline/Non-Directional/Cross-Hairline
Width: ≤1530mm Length: ≤6000mm
Thickness: 0.4mm-3.0mm



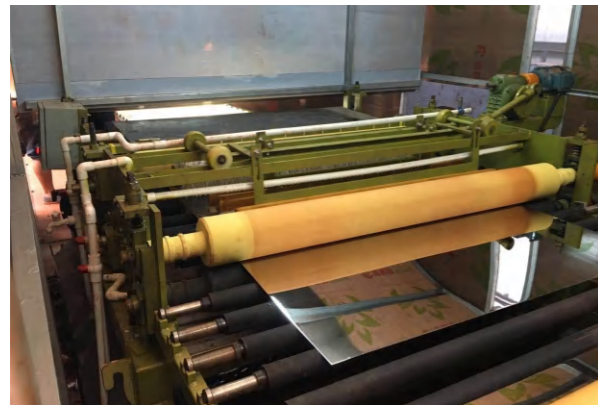
Bead-Blasting Production Line

Ra custom & Both sides Bead-Blasted available
Width: ≤1530mm Length: ≤6000mm
Thickness: 0.5mm-3.0mm



Anti-Finger Print (AFP) Process Line

Color AFP available
Width: ≤1530mm Length: ≤6000mm
Thickness: 0.4mm-3.0mm



Mirror Polishing Line

Finish Standard: 6k Polishing/8k Mirror/Super Mirror
Width: ≤1530mm Length: ≤6000mm
Thickness: 0.4mm-3.0mm



PVD Color Coating Machine

Colors custom available according to control samples
Width: ≤1530mm Length: ≤6000mm
Thickness: 0.4mm-3.0mm



Chemical Copper Coating Line

Antique Finish
Width: ≤1530mm Length: ≤6000mm
Thickness: 0.5mm-3.0mm



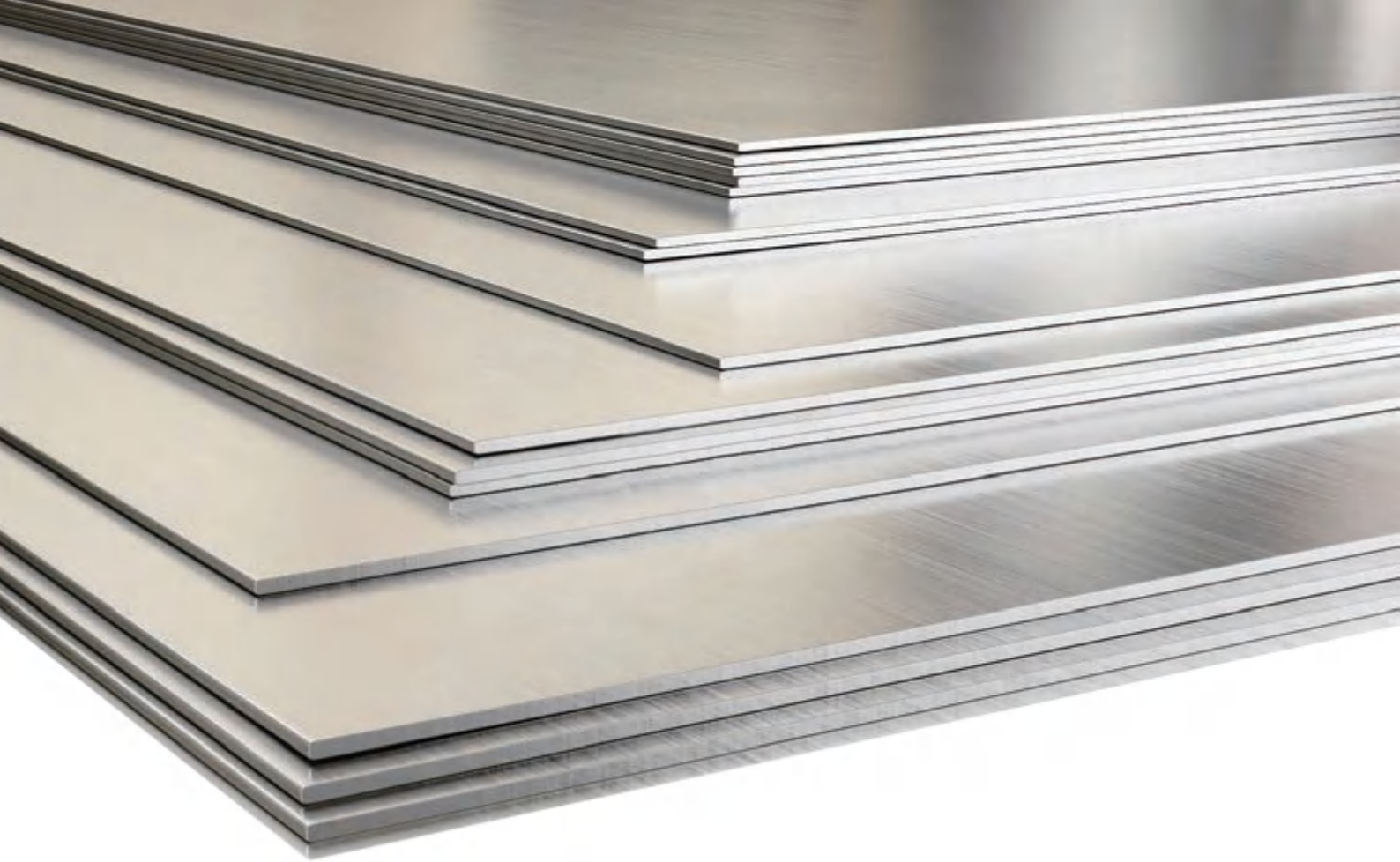
Embossed Process Line

Patterns custom available
Width: 710mm-1400mm Length: 100mm-6000mm
Thickness: 0.3mm-3.0mm



Etching Process Line

Patterns custom/Deep etched available
Width: ≤1530mm Length: ≤4500mm
Thickness: 0.4mm-3.0mm



LEADING STAINLESS STEEL MATERIAL SUPPLIER

◆ STAINLESS STEEL COILS

Mill	Tisco/Jisco/Lisco/Baoxin/ZPSS/Hongwang/Yongjin/Aoxing/etc.
Supply Condition	Hot Rolled(HR) & Cold Rolled(CR)
Finishes	No.1/2B/BA/2BA
Grade ASTM/AISI/JIS	200 Series: 201J1/J2/J4(No.1/2B); Full Hard(480HV)
	300 Series: 304(No.1/2B/BA); 316L(No.1/2B); 301(No.1/2B), Hard Material(1/4H, 1/2H, 3/4H, EH)
	400 Series: 430(No.1/2B/BA/2BA); 410S(No.1/2B/BA/2BA); 420J1/J2(No.1/2B)
Thickness(mm)	2.20-12.00(HR)/0.30-3.00(CR)
Width(mm)	1000/1219/1240/1250/1500
Edge	Slit/Mill
Weight	5/10/20 MT or customized

◆ STAINLESS STEEL SHEETS/ PLATES

Mill	Tisco/Jisco/Lisco/Baoxin/ZPSS/Hongwang/Yongjin/Aoxing/etc.
Supply Condition	Hot Rolled(HR) & Cold Rolled(CR)
Finishes	No.1/2B/BA/2BA
Grade ASTM/AISI/JIS	200 Series: 201J1/J2/J4(No.1/2B); Full Hard(480HV)
	300 Series: 304(No.1/2B/BA); 316L(No.1/2B); 301(No.1/2B), Hard Material(1/4H, 1/2H, 3/4H, EH)
	400 Series: 430(No.1/2B/BA/2BA); 410S(No.1/2B/BA/2BA); 420J1/J2(No.1/2B)
Thickness(mm)	2.20-12.00(HR)/0.30-3.00(CR)
Width(mm)	20-850/1000/1219/1240/1250/1500
Length(mm)	2000/2438/3048/6096/customized
Weight	Up to 2.5MT/Pallet





LEADING STAINLESS STEEL MATERIAL SUPPLIER

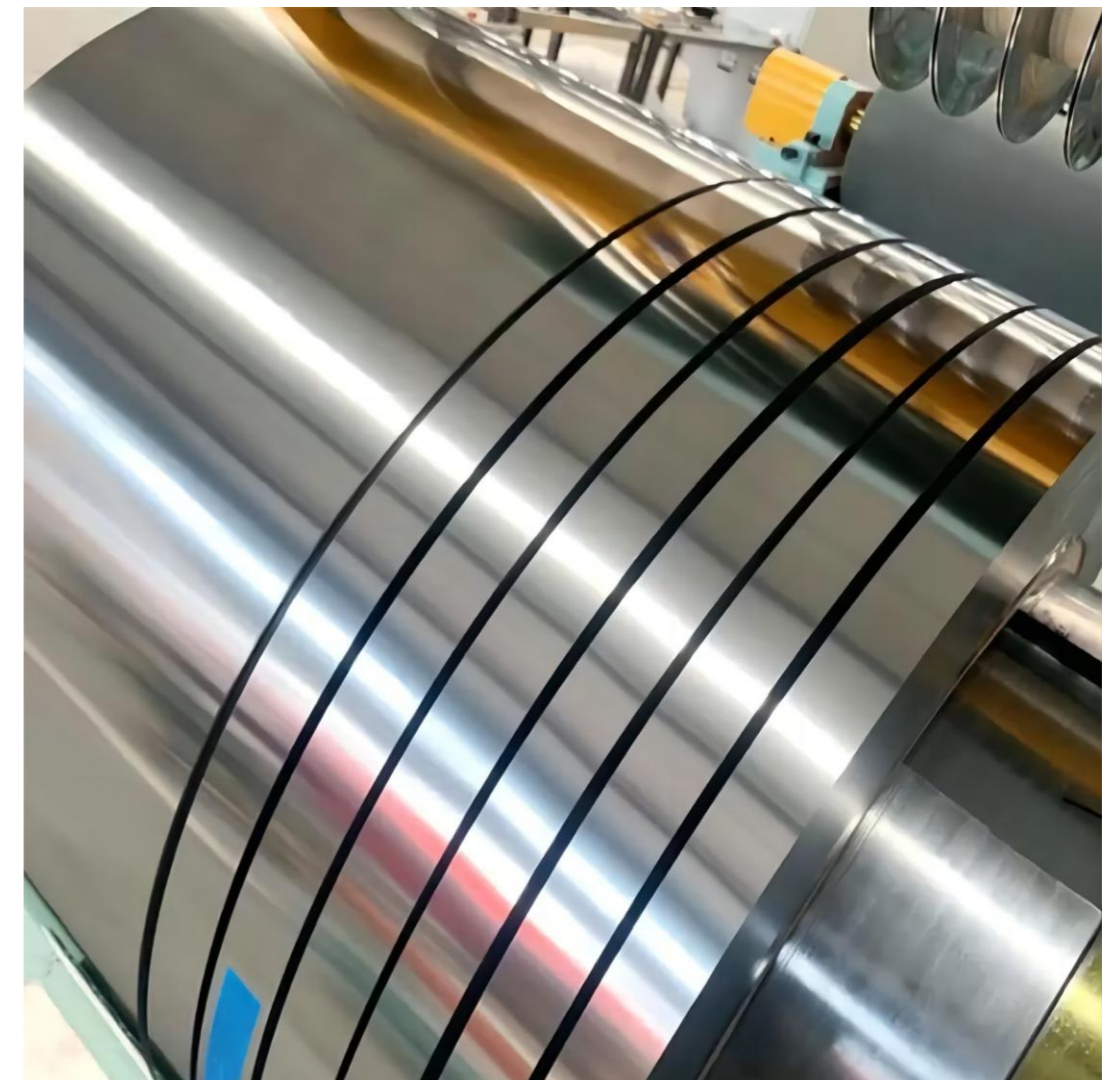


◆ STAINLESS STEEL STRIPS

Supply Condition	Cold Rolled(CR)
Finishes	2B/BA/2BA
Grades ASTM/AISI/JIS	200 Series: 201J1/J2/J4(2B); Full Hard Material (480HV)
	300 Series: 304(2B/BA); 316L(2B); 301(2B), Hard Material (1/4H, 1/2H, 3/4H, EH)
	400 Series: 430(2B/BA/2BA); 410S(2B/BA/2BA); 420J1/J2(2B)
Thickness(mm)	0.30-3.00
Width(mm)	10-850

◆ STAINLESS STEEL CIRCLE

Supply Condition	Cold Rolled(CR)
Finishes	2B/BA/2BA
Grades ASTM/AISI/JIS	200 Series: 201J1/J2/J4(2B);
	300 Series: 304(2B/BA); 316L(2B); 301(2B)
	400 Series: 430(2B/BA/2BA); 410S(2B/BA/2BA); 420J1/J2(2B)
Thickness(mm)	0.30-2.50
Diameter(mm)	100-900
Process	Hydraulic cutting /Laser cutting



Material: 201/304/316L/430/etc
Max Width: 1500mm

Thickness: 0.40mm-3.00mm
Max Length: 6000mm

◆ **Mirror Finish**



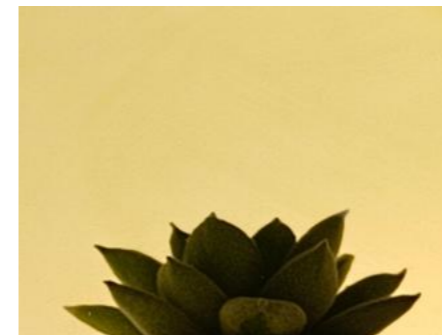
8k Mirror



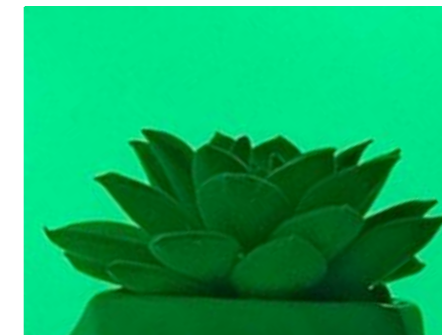
Mirror Blue



Mirror Champagne Gold



Mirror Gold

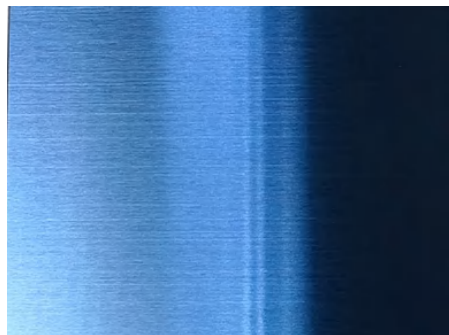


Mirror Green

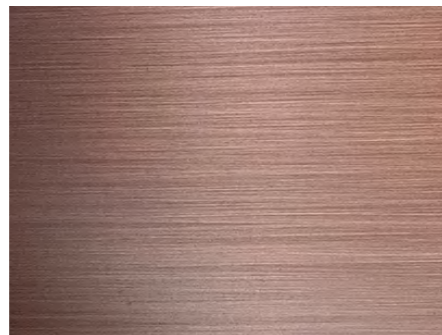


Mirror Rose Gold

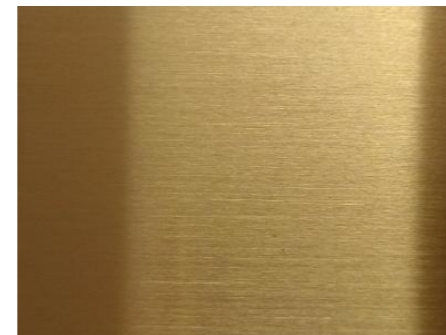
◆ **Brushed Finish**



Hairline Blue



Hairline Bronze



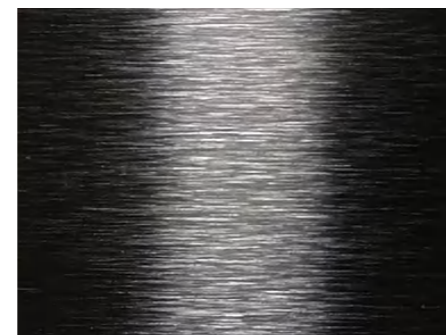
Hairline Copper



Hairline Green



Hairline Rose Gold



Satin Black

Material: 201/304/316L/430/etc
Max Width: 1500mm

Thickness: 0.40mm-3.00mm
Max Length: 6000mm

Decorative Stainless Steel Sheet





Material: 201/304/316L/430/etc
Max Width: 1500mm

Thickness: 0.40mm-3.00mm
Max Length: 6000mm



◆ Vibration Finish



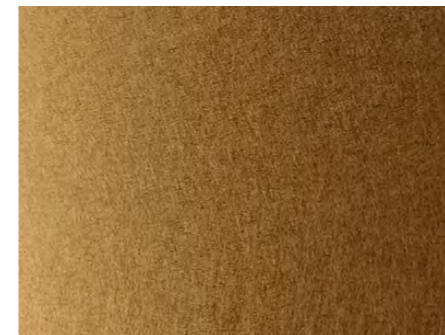
Copper Vibration



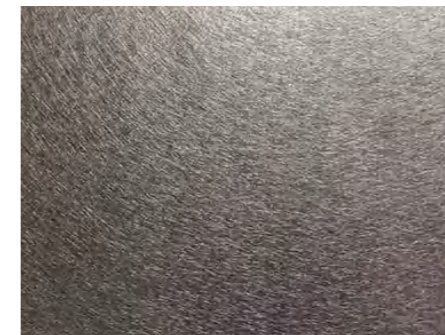
Gold Vibration



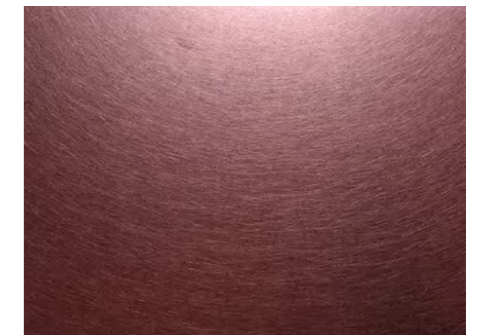
Green Vibration



Rose Gold Vibration

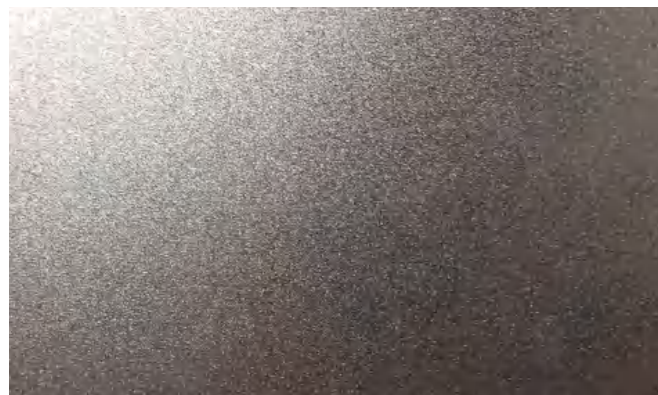


Vibration



Wine Red Vibration

◆ Bead Blast Finish



Bead Blast



Copper Bead Blast



Gold Bead Blast



Rose Gold Bead Blast

Material: 201/304/316L/430/etc
Max Width: 1500mm

Thickness: 0.40mm-3.00mm
Max Length: 6000mm





Material: 201/304/316L
Max Width: 1500mm

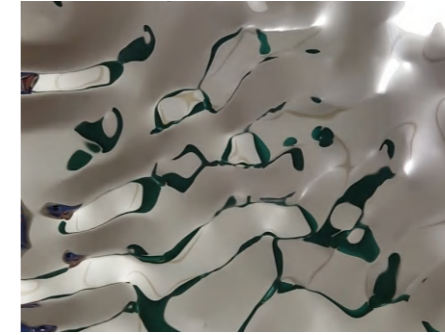
Thickness: 0.70mm-1.20mm
Max Length: 3048mm



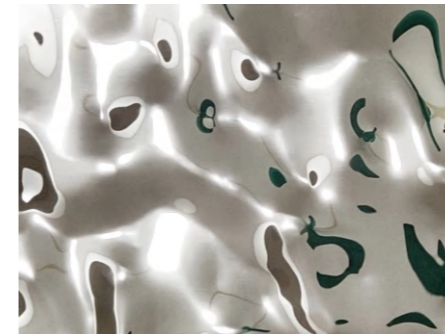
◆ Water Ripple Finish



F-Wave Water Ripple



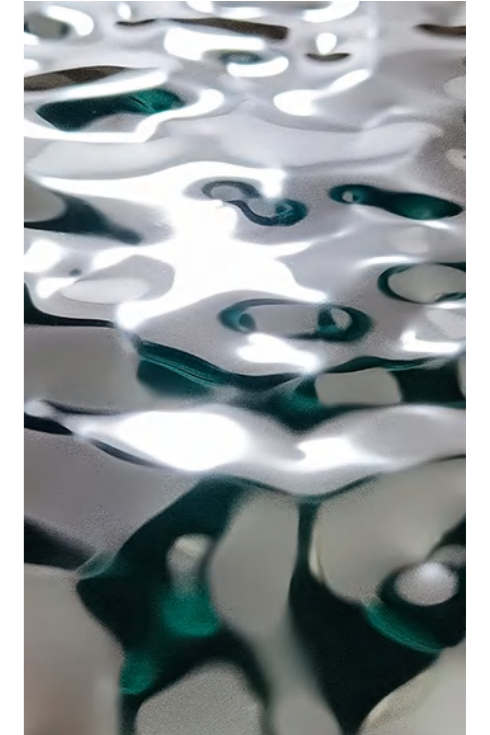
G-Wave Water Ripple



M-Wave Water Ripple

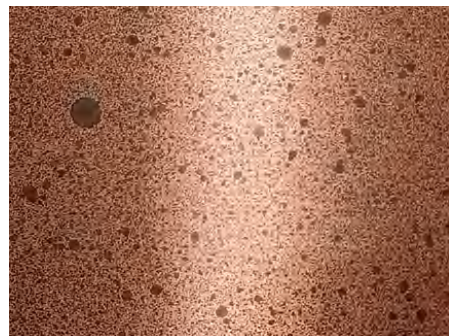


R-Wave Water Ripple



S-Wave Water Ripple

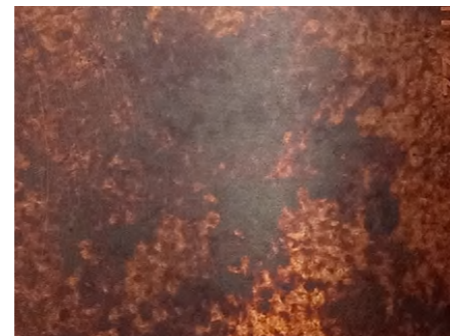
◆ Antique Finish



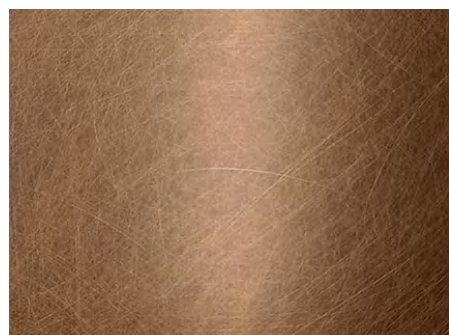
AT-01



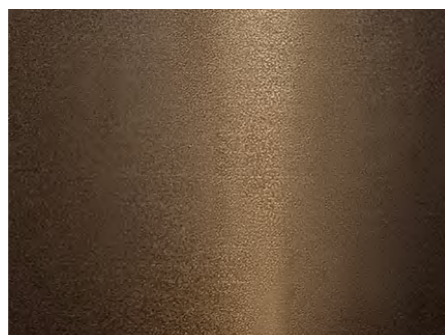
AT-02



AT-05



AT-06



AT-07



AT-08

Material: 201/304/316L/430/etc
Max Width: 1500mm

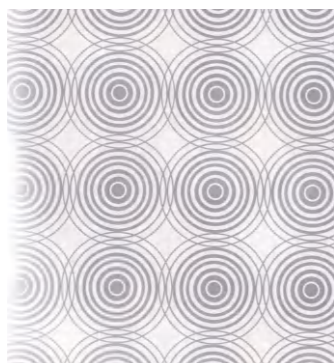
Thickness: 0.40mm-3.00mm
Max Length: 6000mm



◆ Etched Pattern



XM-ET (1)



XM-ET (2)



XM-ET (3)



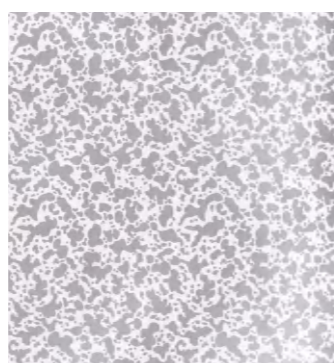
XM-ET (4)



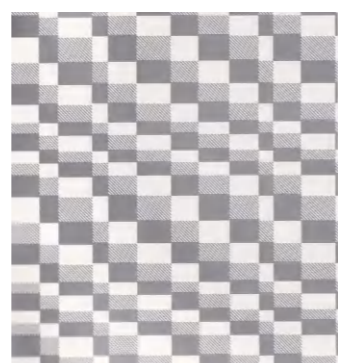
XM-ET (5)



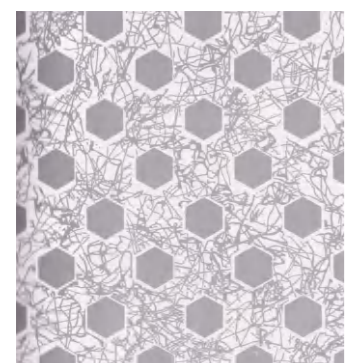
XM-ET (6)



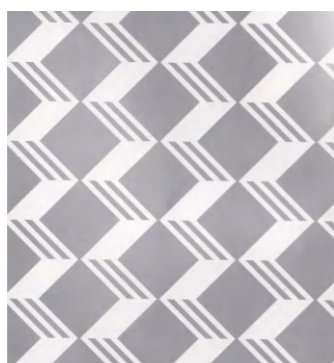
XM-ET (7)



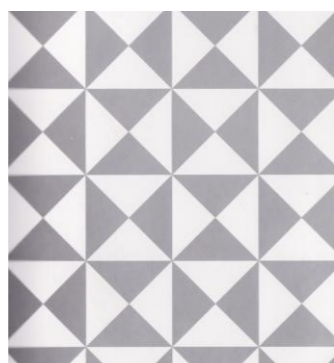
XM-ET (8)



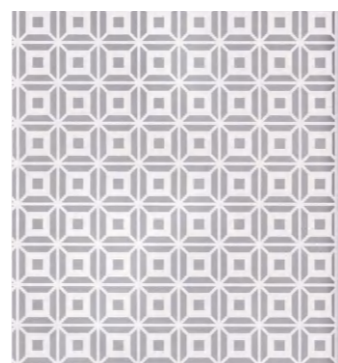
XM-ET (9)



XM-ET (10)



XM-ET (11)



XM-ET (12)



XM-ET (13)



XM-ET (14)



XM-ET (15)



XM-ET (16)

Material: 201/304/316L/430/etc
Max Width: 1500mm/Customized

Thickness: 0.40mm-2.00mm
Max Length: 3000mm/Customized



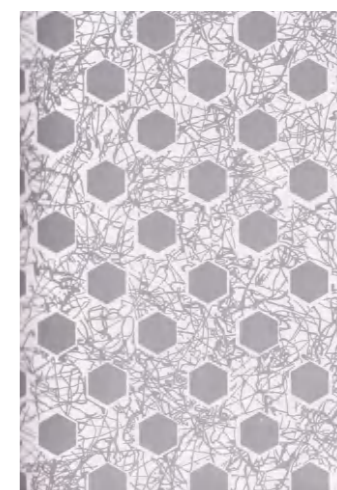
◆ Etched Pattern



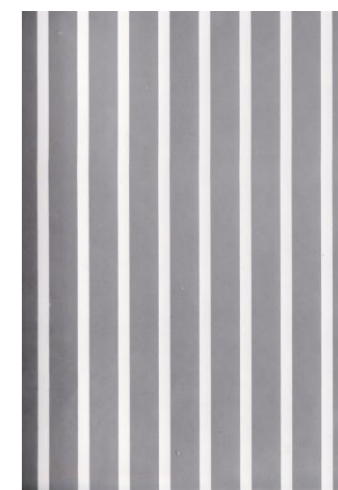
XM-ET (17)



XM-ET (18)



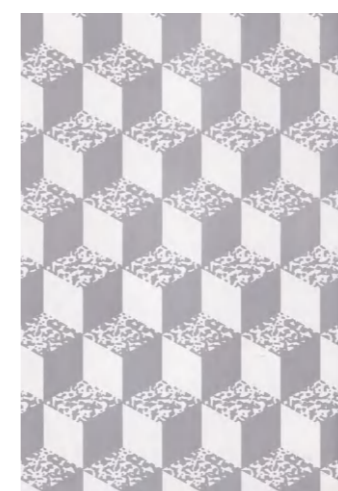
XM-ET (19)



XM-ET (20)



XM-ET (21)



XM-ET (22)



XM-ET (23)



XM-ET (24)

Material: 201/304/316L/430/etc
Max Width: 1500mm/Customized

Thickness: 0.40mm-2.00mm
Max Length: 3000mm/Customized

◆ Elevator Pattern



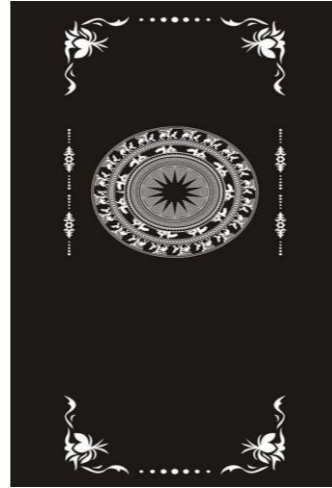
XM-ED3604



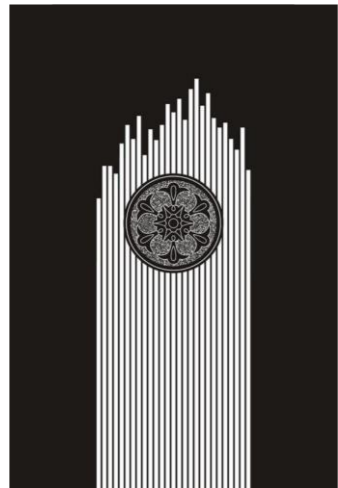
XM-ED3606



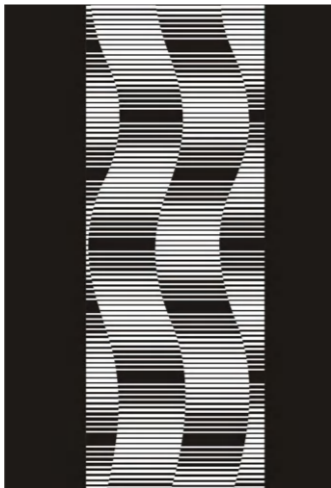
XM-ED3607



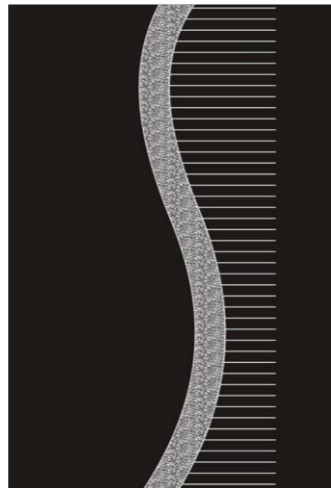
XM-ED3608



XM-ED3611



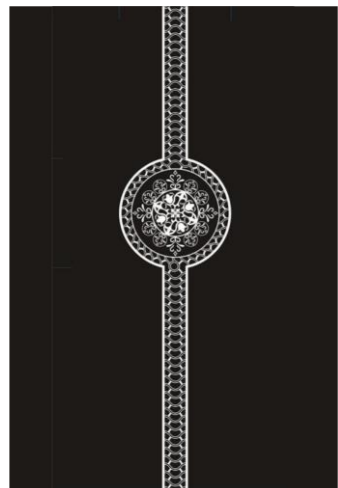
XM-ED3612



XM-ED3613



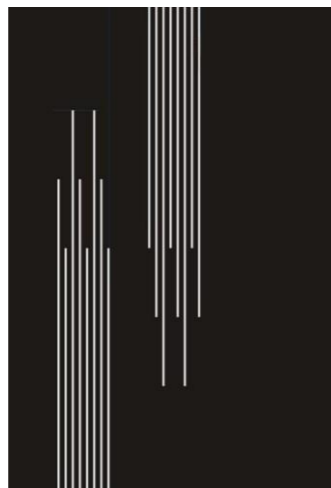
XM-ED3614



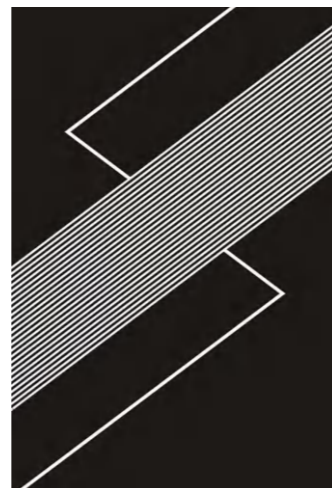
XM-ED3616



XM-ED3618



XM-ED3619



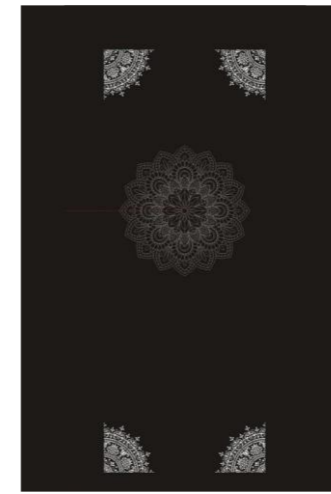
XM-ED3623



◆ Elevator Pattern



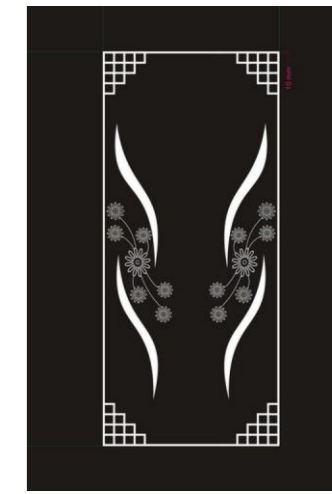
XM-ED3624



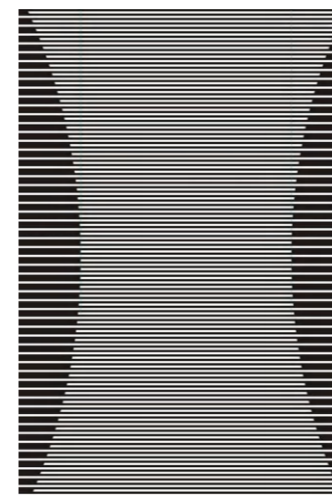
XM-ED3625



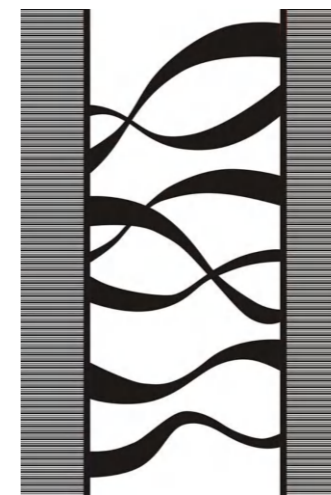
XM-ED3627



XM-ED3628



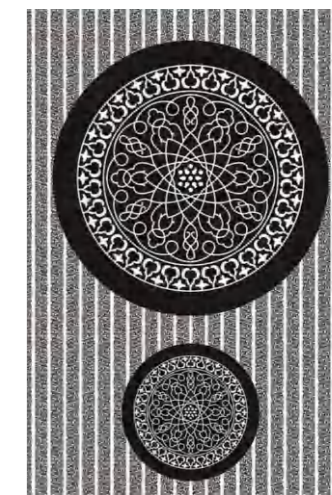
XM-ED3629



XM-ED3636



XM-ED3638



XM-ED3641

◆ **Embossed Finish**



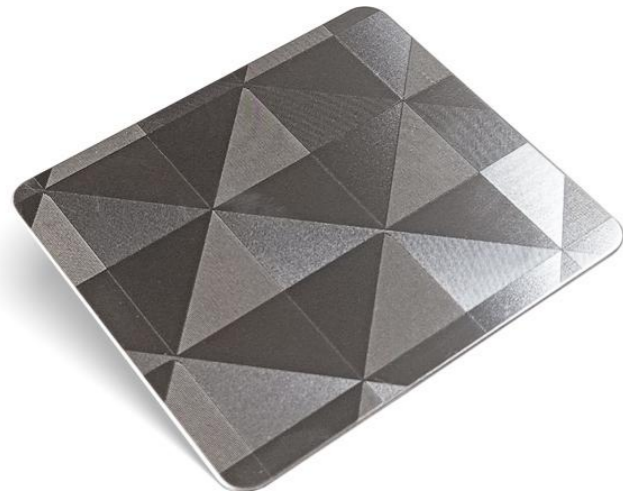
XM-EM (1)



XM-EM (2)



XM-EM (3)



XM-EM (4)



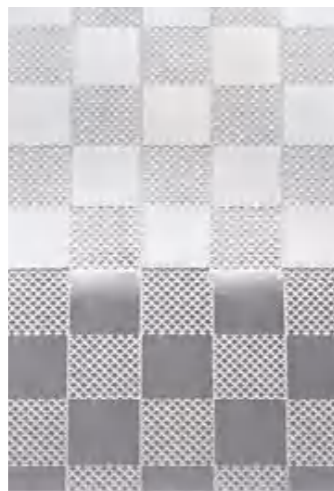
XM-EM (5)



XM-EM (6)



XM-EM (7)



XM-EM (8)



XM-EM (9)



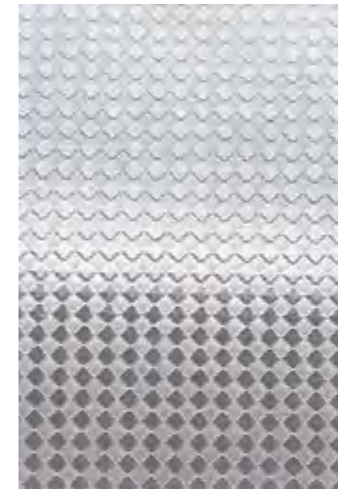
XM-EM (10)

Material: 201/304/316L/430/etc
Max Width: 1219mm/Customized

Thickness: 0.30mm-2.00mm
Max Length: 6000mm/Customized



◆ **Embossed Finish**



XM-EM (11)



XM-EM (12)



XM-EM (13)



XM-EM (14)



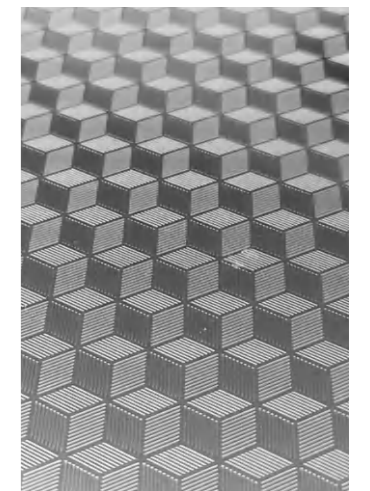
XM-EM (15)



XM-EM (16)



XM-EM (17)

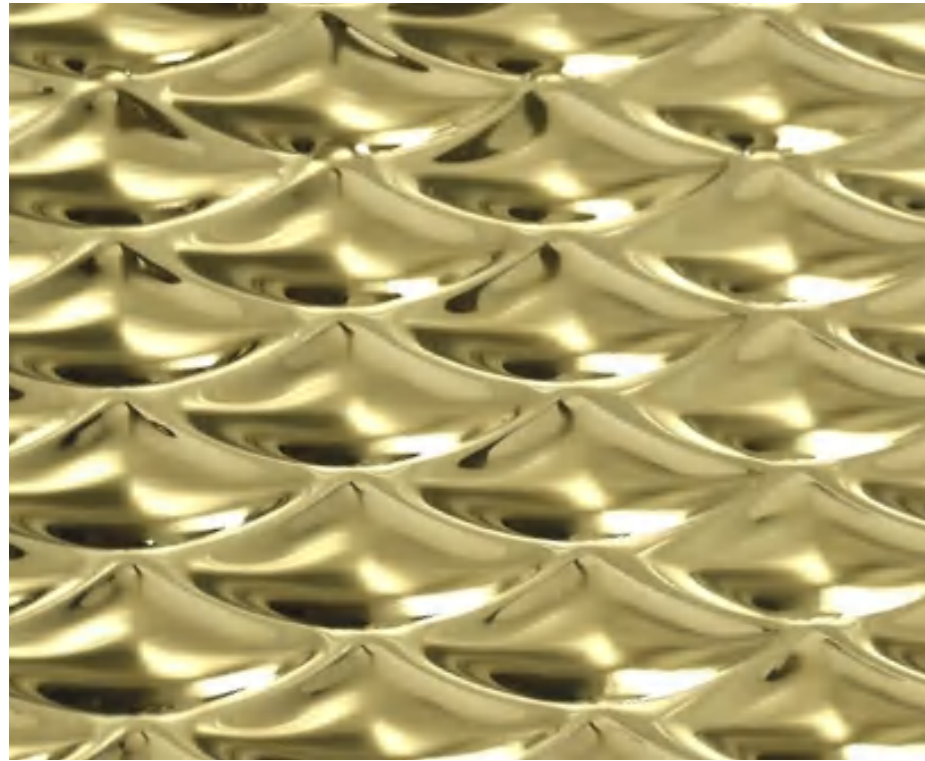


XM-EM (18)

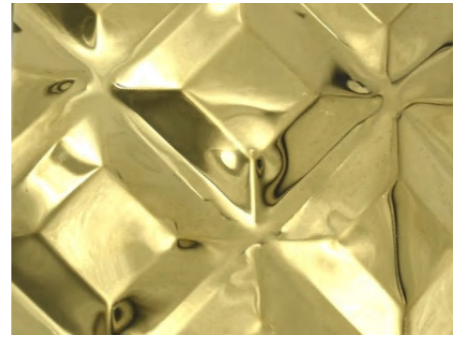
Material: 201/304/316L/430/etc
Max Width: 1219mm/Customized

Thickness: 0.30mm-2.00mm
Max Length: 6000mm/Customized

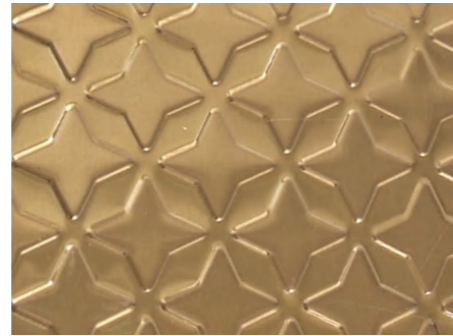
◆ Textured Finish



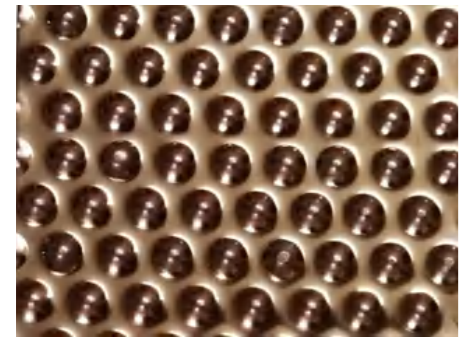
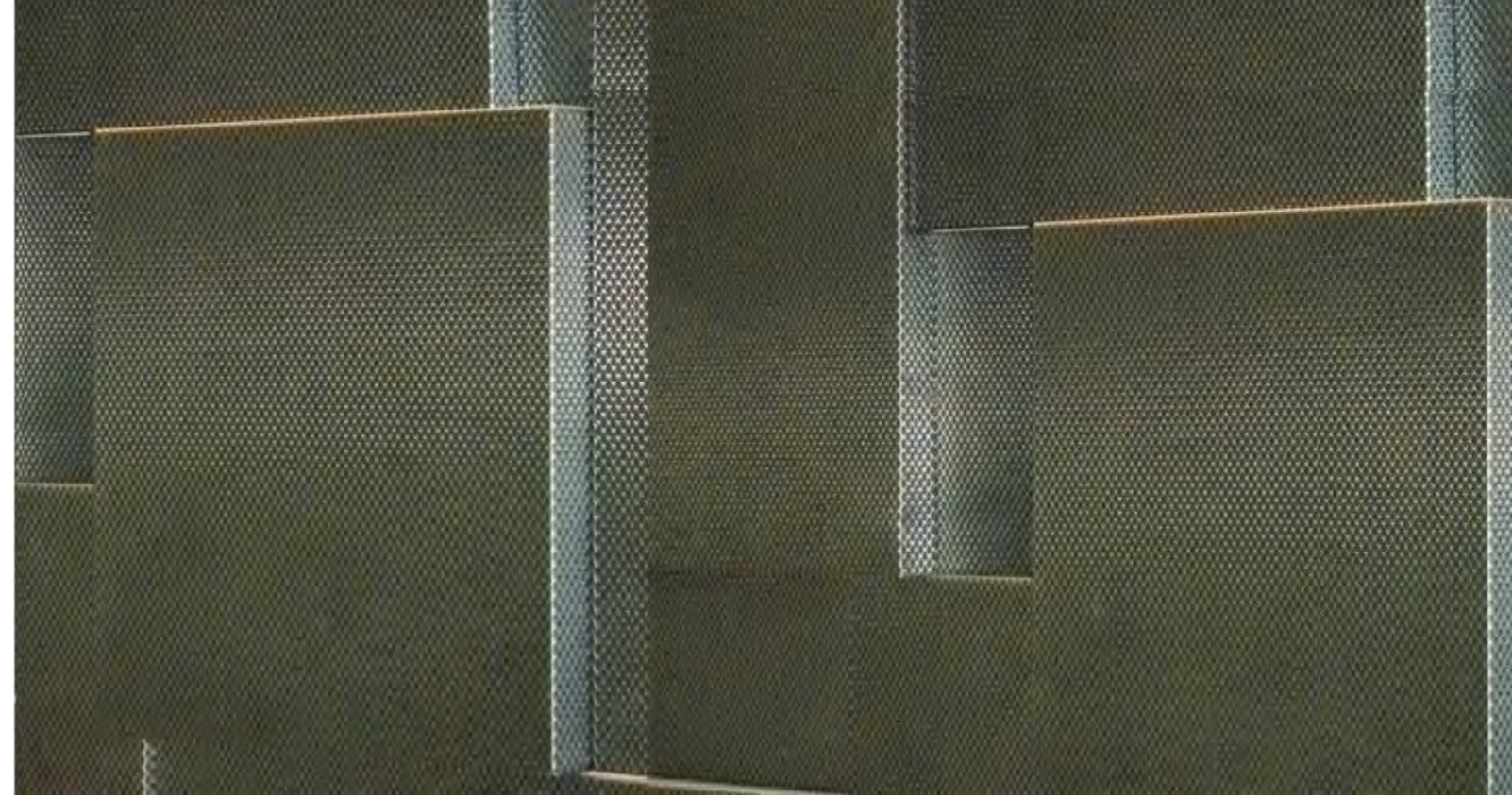
XM-T (1)



XM-T (2)



XM-T (3)



XM-T (4)

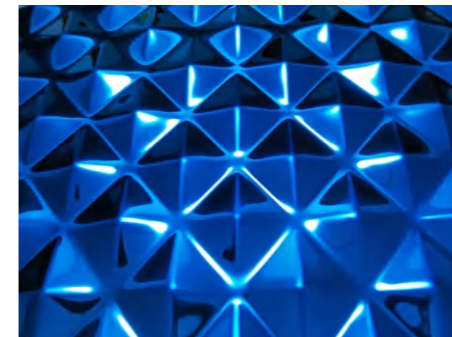


XM-T (5)

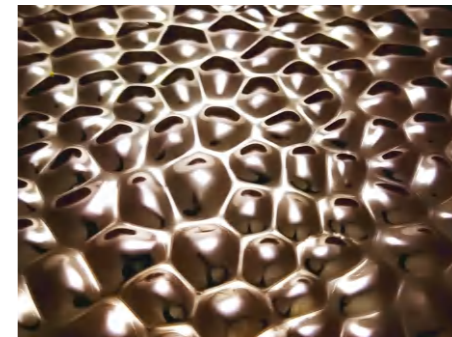


XM-T (6)

◆ Textured Finish



XM-T (10)



XM-T (11)



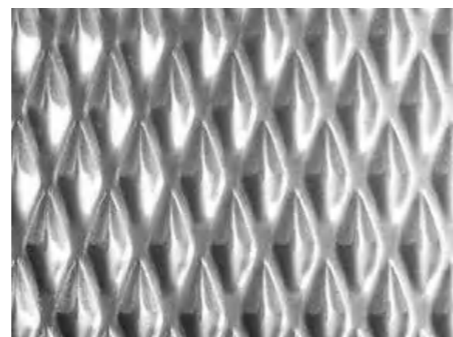
XM-T (12)



XM-T (7)



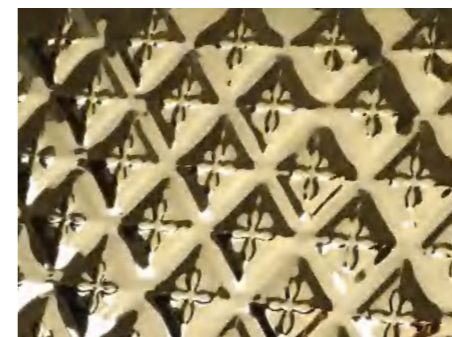
XM-T (8)



XM-T (9)



XM-T (13)



XM-T (14)



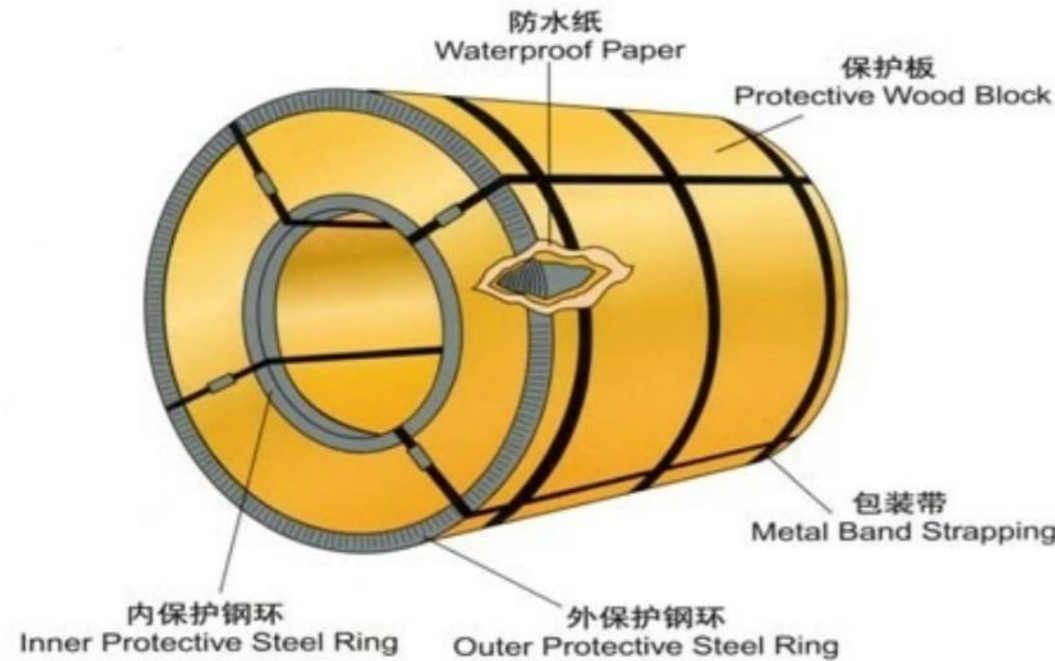
XM-T (15)

Material: 201/304/316L/430/etc
Max Width: 1500mm/Customized

Thickness: 0.40mm-2.00mm
Max Length: 6000mm/Customized

Material: 201/304/316L/430/etc
Max Width: 1500mm/Customized

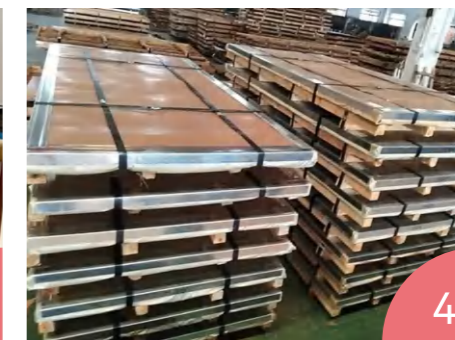
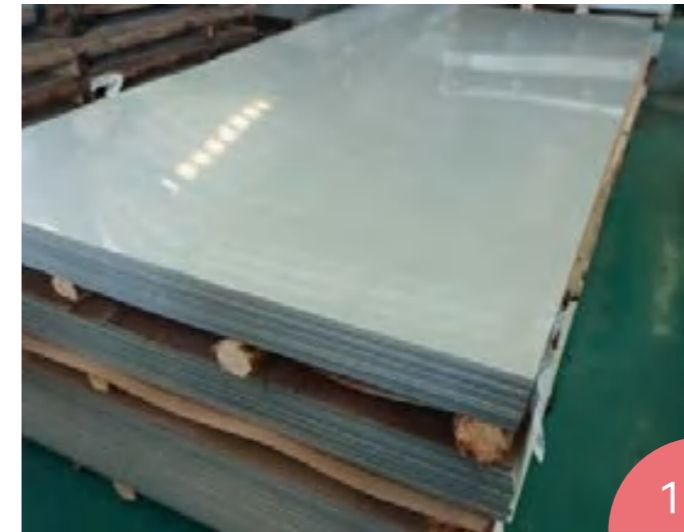
Thickness: 0.40mm-2.00mm
Max Length: 6000mm/Customized



◆ Stainless Steel Coil

Packaging: The stainless steel coils are wrapped in paper as per customer requirements. If the shipment is exposed to special climate conditions, additional waterproof packaging and plastic film are used for extra protection against moisture and rust.

Loading: Wooden pallets and triangular wood blocks are used to stabilize the coils, and steel wire ropes are tied on both sides to prevent any crushing damage during transportation



◆ Stainless Steel Sheet

Packaging: Stainless steel sheets are covered with wooden plates for protection and are placed in strong, reinforced wooden crates.

Loading : Upon loading into the container, photographs are taken to document the condition before it is subsequently sealed.

Communication: The shipping process is expedited, and customers are kept informed at each step.

FOSHAN GUANGHETONG TRADING CO., LTD.

Add: 1802/18F, Expo Financial Center, Chancheng District, Foshan,
Guangdong, China

Tel: +86-757-83078795

Email: sales@ghtsteel.com

Web: www.ghtsteel.com

